

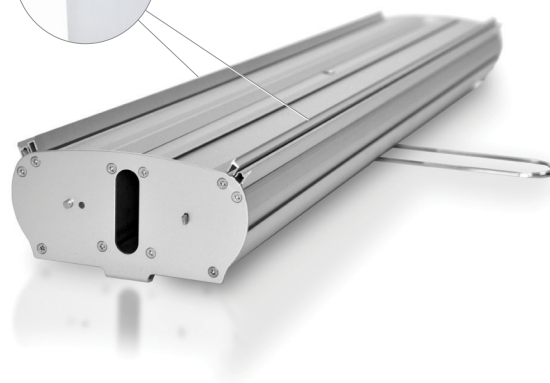
DOUBLE



- Heavy gauge aluminum construction.
- **Silver**
- Graphics are held with top clamp rails and bottom adhesive leader films.
- **Fixed** height 3-part pole.
- Padded carrying case included.



custom hard travel case accommodates a single Double stand



For instructions on preparing and submitting artwork - see back of catalog cover.

Item	Finish	W	H	Print Only Both Sides			Hardware + Print		
				1-3	4-7	8+	1-3	4-7	8+
CAT-DRDS34	Silver	33.5"	78.5"	\$290	\$274	\$265	\$506	\$476	\$453
CAT-DRCMCS	Magnetic Top Clamp Connector (x2) \$31								

*Starting price on Vision Smooth Vinyl. Prices may vary based on banner material and add-on options. We recommend adding 7" of length to the bottom of the viewable graphic height (listed above) in order to reinforce the attachment to the spring cassette.