

DISPLAYS & GRAPHIC SOLUTIONS 2023



RETRACTABLE BANNERS • TENSION DISPLAYS • FLAGS
• TENTS • DISPLAYS • TABLE THROWS • A-FRAMES

801.973.8929 • VISIONDOESIT.COM/DISPLAY



**VISION
GRAPHICS**
LOOK GOOD. BE SEEN.

HOW TO ORDER

1



CHOOSE A PRODUCT

Review the catalog and select the product(s) that meet your need and best display your message.

If you have questions, need more information, or to check on pricing and order time on these products, reach out to your Sales Person or email info@visiondoesit.com

2



DESIGN SERVICES FROM VISION GRAPHICS

We can create your design for you! Reach out to us to start your order and get pricing on our services.

To expedite your design time, please be prepared with your company logo, desired text copy and any images you want to appear on your graphic.

Don't have any images or photos? Vision Graphics can buy stock imagery, for a fee, if needed.

There are 3 ways to contact us:

- Contact your sales person or CSR
- Email info@visiondoesit.com
- Call us at 801-973-8929

OR



DESIGN YOUR OWN

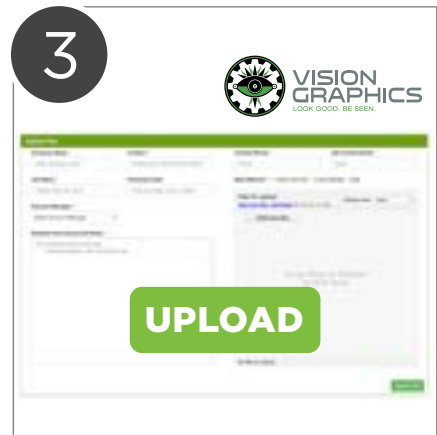
If you're designing in house, download the desired design template from our website.

Download templates for all products in this catalog at VisionDoesIt.com/Templates.

Please follow these guidelines and additional guidelines within the template when preparing your print ready art:

- Do not delete any layers.
- Place all graphics on the “*Your Art Here” layer.
- Do not scale, transform or otherwise edit the template (unless the product is adjustable). Each template will state what scale it was created at.

3



SEND US YOUR ARTWORK

If you prepared your own artwork, you have two ways to submit your file for production:


1. You can upload your print-ready file on our website. Go to VisionDoesIt.com and choose **File Upload**.
2. Email your file to your sales person or CSR.

Talk to your sales person about available inventory and the production timeline for your specific order. We will begin your job right away. Most orders can be completed within 3 business days.

CONTACT US ANYTIME:
801.973.8929 | info@visiondoesit.com

Availability and pricing are current at the time of printing. Products and prices are subject to change without notice and do not account for tariffs or other surcharges. Contact Vision Graphics for up-to-date information.

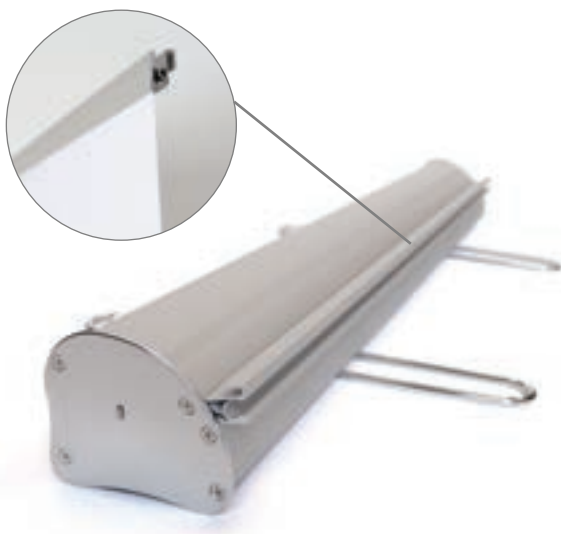
CONTENTS

	2-6		BANNER STANDS
	7-9		TABLE THROWS
	10-15		OUTDOOR
	16-27		DISPLAY ACCESSORIES
	28-33		CUSTOM CONCEPTS
	34-37		INFINITY BACKWALLS
	38-40		INFINITY ACCESSORIES
	41		A-FRAMES
	42-43		PROMOTIONAL PRODUCTS & APPAREL
	44		OVERHEAD DISPLAY CATALOG
	45		DESIGN SERVICES



801.973.8929
2525 South 900 West
Salt Lake City, Utah 84119
VISIONDOESIT.COM/DISPLAY

RETRACTABLE



12" Tabletop Version

The tabletop model is an adjustable-height product. The print price assumes a full-height graphic. The 12" tabletop model does not have support feet, the 24" model has 1 support foot, other sizes feature 2 support feet.

BANNER STANDS

RELIANT



- Heavy gauge aluminum construction.
- Polished chrome end caps and feet.
- Finish: **Silver** or **Black**
- Graphic is held with top clamp rail and bottom adhesive leader film.
- Features fixed-height 3-part pole (34", 39", 48" And 60" models).
- Features fixed-height 4-part pole (24" model only).
- Features adjustable-height pole (15" model only).
- Features adjustable-height 2-part pole (12" model only).
- Padded carrying case included.



lifetime
warranty



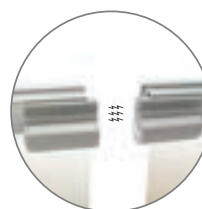
indoor



connectable



custom
printing
available



magnetic top
clamp connector



universal
light kit



UL listed

For instructions on preparing and submitting artwork - see back of catalog cover.

Item	Finish	W	H	Print Only			Hardware + Print*		
				1-5	6-11	12+	1-5	6-11	12+
CAT-DRRS12	Silver	11.75"	20"	\$49	\$46	\$42	\$105	\$100	\$94
CAT-DRRS15	Silver	15"	35.5"	\$55	\$52	\$50	\$149	\$138	\$132
CAT-DRRB15	Black	15"	35.5"	\$55	\$52	\$50	\$157	\$148	\$140
CAT-DRRS24	Silver	23.5"	78"	\$101	\$95	\$92	\$237	\$219	\$206
CAT-DRRS34	Silver	33.5"	78"	\$144	\$136	\$132	\$300	\$284	\$268
CAT-DRRB34	Black	33.5"	78"	\$144	\$136	\$132	\$318	\$300	\$284
CAT-DRRS39	Silver	39.3"	78"	\$169	\$160	\$154	\$355	\$336	\$320
CAT-DRRS48	Silver	47.25"	78"	\$203	\$192	\$186	\$419	\$398	\$382
CAT-DRRS60	Silver	59"	78"	\$254	\$240	\$232	\$500	\$476	\$458

Description	Item	Hardware
Magnetic Top Clamp Connector	CAT-DRAMCS	\$15
Universal LED Light Kit, 50W	CAT-DRULSL	\$84

*The 48" and 60" Reliant models feature 2 fixed-height poles, for added stability. Starting price on Vision Smooth Vinyl. Prices may vary based on banner material and add-on options. We recommend adding 7" of length to the bottom of the viewable graphic height (listed above) in order to reinforce the attachment to the spring cassette.

RETRACTABLE

MAJESTIC



- Interchangeable graphic drum.
- Adjustable height (allows for use as tabletop display).
- Finish: **Silver**
- Graphic is held with top clamp rail and bottom clamp drum.
- Features adjustable-height pole.
- Padded carrying case included.



lifetime
warranty



indoor



connectable



custom
printing
available



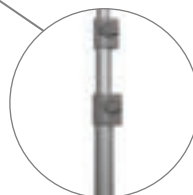
adjustable
height



universal
light kit



UL listed



adjustable
height pole

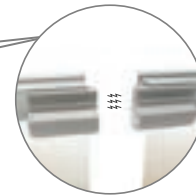


custom hard travel case
accommodates a single
Majestic stand

For instructions on preparing and submitting artwork - see inside front cover.

BANNER STANDS

SINGLE-SIDED RETRACTABLE DISPLAYS



magnetic top
clamp connector

Item	Finish	W	H	Print Only			Hardware + Print		
				1-3	4-7	8+	1-3	4-7	8+
CAT-DRMS34	Silver	33.3"	84"	\$154	\$146	\$141	\$434	\$416	\$393
CAT-DRMS39	Silver	39.3"	84"	\$182	\$172	\$166	\$490	\$468	\$448
CAT-DRMS48	Silver	47.25"	84"	\$219	\$207	\$200	\$577	\$553	\$534
CAT-DRMS60	Silver	59"	84"	\$274	\$258	\$250	\$714	\$684	\$662
Note: This is an adjustable-height product. The print price assumes a full-height production.									

Item	Description	Hardware
CAT-DRMD34	Interchangeable Graphic Drum for CAT-DRMS34	\$50
CAT-DRMD39	Interchangeable Graphic Drum for CAT-DRMS39	\$58
CAT-DRMD48	Interchangeable Graphic Drum for CAT-DRMS48	\$62
CAT-DRMD60	Interchangeable Graphic Drum for CAT-DRMS60	\$72
CAT-DRAMCS	Magnetic Top Clamp Connector	\$15
CAT-DRULSL	UL-Listed Hologen Light, 50W	\$86

*Starting price on Vision Smooth Vinyl. Prices may vary based on banner material and add-on options. We recommend adding 7" of length to the bottom of the viewable graphic height (listed above) in order to reinforce the attachment to the drum cassette.

RETRACTABLE

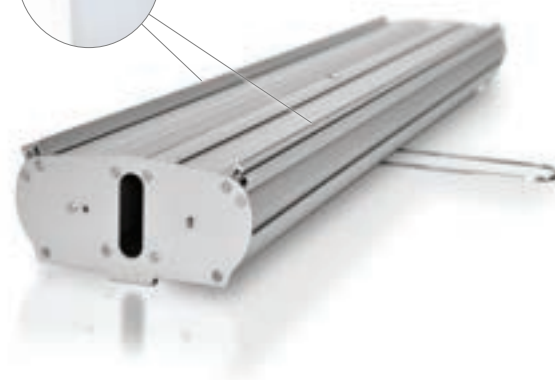
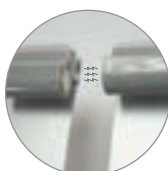
DOUBLE



- Heavy gauge aluminum construction.
- Finish: **Silver**
- Graphics are held with top clamp rails and bottom adhesive leader films.
- Features fixed-height 3-part pole.
- Padded carrying case included.



custom hard travel case accommodates a single Double stand



For instructions on preparing and submitting artwork - see back of catalog cover.

Item	Finish	W	H	Print Only Both Sides			Hardware + Print		
				1-3	4-7	8+	1-3	4-7	8+
CAT-DRDS34	Silver	33.5"	78.5"	\$290	\$274	\$265	\$506	\$476	\$453
CAT-DRCMCS	Magnetic Top Clamp Connector (x2) \$31								

*Starting price on Vision Smooth Vinyl. Prices may vary based on banner material and add-on options. We recommend adding 7" of length to the bottom of the viewable graphic height (listed above) in order to reinforce the attachment to the spring cassette.

TABLE THROWS

STANDARD



TABLE THROW FABRIC COLORS

- Magenta
- Lime Green
- Orange
- Red
- Royal Blue
- White
- Black
- Burgundy
- Yellow
- Kelly Green
- Hunter Green
- Blueberry
- Navy Blue
- Purple
- Charcoal
- Gray
- Ivory
- Beige

Dye Sublimation - White fabric is dyed with full-color graphics that become part of the fibers.

* Files will be printed as submitted, in CMYK, unless a PMS color is specified.

- Our best selling table throw!
- Covers 4 sides of the table - allowing for storage space under the table.
- Easy access for storage under table.
- Machine washable and wrinkle resistant. Do not dry clean and do not iron.
- Flame retardant, premium quality polyester poplin fabric.
- Custom tablecloth colors available.
- Files will be printed as submitted, in CMYK, unless a PMS color is specified. See the standard color guide on this page.
- Art templates are available at visiondoesit.com/templates.

6' OR 8' TABLE THROWS

Item	Finish	W	H	Each*
TBT-STD-72	Full-bleed	130.5"	88.5"	\$380
TBT-STD-96	Full-bleed	154.5"	88.5"	\$400

*Base Price. Starting price on Vision FR Knit Fabric. Prices may vary based on material and add-on options.

PRODUCT INFORMATION

Item	Description	Product Size	Recommended Table Size	Full Bleed Imprint Area
TBT-STD-72	6 Ft. Table Throw	126.5"W x 84"H	72" W x 30" H x 30" D	126.5"W x 84"H
TBT-STD-96	8 Ft. Table Throw	150"W x 84"H	96" W x 30" H x 30" D	154.5"W x 84"H

*Starting price on Vision FR Knit fabric. Prices may vary based on material and add-on options.

****Additional sizes and quantities are available. Call for pricing.**

TABLE THROWS

BOX FIT



Front View



Back View

- Tailored lines create a polished appearance at any event, meeting, show or career fair.
- Covers 4 sides of the table with a 9.5 inch overhang in the back.
- Tight fitted look.
- Machine washable and wrinkle resistant. Do not dry clean and do not iron.
- Flame retardant, premium quality polyester poplin fabric.
- Creates instant storage under the table.
- Files will be printed as submitted, in CMYK, unless a PMS color is specified. See page 6 for a standard color guide.
- Art templates are available at visiondoesit.com/templates.

6' OR 8' TABLE THROWS

Item	Finish	W	H	Print Only
				1
TBT-FTD-72	Box Fit	131.5"	89.5"	\$380
TBT-FTD-96	Box Fit	155.5"	89.5"	\$400

*Base Price. Starting price on Vision Soft Knit Fabric printed double-sided. Prices may vary based on material and add-on options.

PRODUCT INFORMATION

Item	Description	Product Size	Recommended Product Size	Full Bleed Imprint Area
TBT-FTD-72	6 Ft. Table Throw	132"W x 70"H	72"W x 29"H x 30"D	132"W x 70"H
TBT-FTD-96	8 Ft. Table Throw	156"W x 68"H	96"W x 29"H x 30"D	156"W x 68"H

*Starting price on Vision FR Knit fabric. Prices may vary based on material and add-on options.

**Additional sizes and quantities are available. Call for pricing.

TABLE RUNNERS



- Premium soft knit polyester fabric
- Flame-retardant & wrinkle-resistant
- Machine washable



1-year warranty on fabric



indoor



made in the USA

Item	Finish	Description	W	H	Print Only
					1
DTR2472	Full-bleed	24" Table Runner, Drape Fit	24"	72"	\$48
DTR3672	Full-bleed	36" Table Runner, Drape Fit	36"	72"	\$72
DTR4872	Full-bleed	48" Table Runner, Drape Fit	48"	72"	\$96
DTR6072	Full-bleed	60" Table Runner, Drape Fit	60"	72"	\$120
DTR7272	Full-bleed	72" Table Runner, Drape Fit	72"	72"	\$144
DTR9672	Full-bleed	96" Table Runner, Drape Fit	96"	72"	\$192

OUTDOOR TENTS

- Full-color dye-sublimation printing
- 600D polyester fabric
- Features weather-proofed canopy seams
- Lightweight and easy to transport, yet incredibly strong
- Thick-walled, 40mm hexagonal, aluminum tubing structure
- Durable nylon components
- Spike and rope kit included
- Basic carrying case included (10' x 10' model)
- Premium wheeled carrying case included (10' x 15' & 10' x 20' models)



lifetime
warranty



1-year
warranty
on fabric



outdoor



custom
printing
available



CAT-TNT10
10' x 10' model shown

NOW OFFERING

Tents in 3 Sizes

10' x 20'



10' x 15'



10' x 10'



Item	W	D	Print Only			Hardware Only			Hardware + Print		
			1-2	3-5	6+	1-2	3-5	6+	1-2	3-5	6+
CAT-TNT10	120"	120"	\$625	\$610	\$595	\$504	\$492	\$476	\$1,129	\$1,102	\$1,071
CAT-TNT15	120"	180"	\$915	\$893	\$870	\$974	\$944	\$912	\$1,889	\$1,837	\$1,782
CAT-TNT20	120"	240"	\$1,190	\$1,160	\$1,140	\$1,272	\$1,242	\$1,212	\$2,462	\$2,402	\$2,352

Item	W	D	Blank Canopy Only		
			1-2	3-5	6+
CAT-TNT10BWCAN	120"	120"	\$270	\$250	\$230
CAT-TNT15BWCAN	120"	180"	\$405	\$375	\$345
CAT-TNT20BWCAN	120"	240"	\$540	\$500	\$460

Item	Description	Hardware Only
CAT-TNTSAR	Spike & Rope Kit	\$22
CAT-TNT10WC	Premium Wheeled Carrying Case for 10' x 10' Tent	\$118



blank tent canopy



premium wheeled
carrying case



spike & rope kit

ADVERTISING TENT WALLS



Full Wall



Half Wall

Item	Description	W	H	Print Only		
				1-2	3-5	6+
CAT-TNT10FWS	Full Wall, Single-sided	116.5"	82"	\$365	\$355	\$345
CAT-TNT10FWD	Full Wall, Double-sided	116.5"	82"	\$730	\$710	\$690
CAT-TNT10HWS	Half Wall, Single-sided	118.5"	38"	\$227	\$224	\$220
CAT-TNT10HWD	Half Wall, Double-sided	118.5"	38"	\$453	\$447	\$441
CAT-TNT15FWS	Full Wall, Single-sided	174"	82"	\$545	\$530	\$515
CAT-TNT15FWD	Full Wall, Double-sided	174"	82"	\$1,090	\$1,060	\$1,030
CAT-TNT20FWS	Full Wall, Single-sided	233"	82"	\$650	\$630	\$610
CAT-TNT20FWD	Full Wall, Double-sided	233"	82"	\$1,300	\$1,260	\$1,221

Half wall option is available for the 10' x 10' sides of all three tent models.

Quantity break pricing for printed items is based on multiple copies of a single art file. For instructions on preparing and submitting artwork for printing, see inside front cover.

Use in adverse weather voids all warranties. See our website for complete details.

(Required for the Half Wall Option)

Half Wall Bar Kit
CAT-TNT10BAR



Item	Description	Hardware Only		
		1-2	3-5	6+
CAT-TNT10BAR	10' Half Wall Bar Kit (Required for the Half Wall option)	\$120	\$108	\$102

OUTDOOR

ADVERTISING FLAGS

- Full-color dye-sublimation printing
- 110g knitted polyester fabric (single-sided flags)
- 100D polyester fabric, tri-layered & includes a blockout center (double-sided flags)
- Direct print process provides excellent color saturation to back side of fabric
- Features reinforced pole sleeve
- Printed flag includes bungee cord to attach to pole base



lifetime warranty



1-year warranty on fabric



outdoor



custom printing available

INCLUDED COMPONENTS



Durable fiberglass-graphite composite pole set with carrying case included

ACCESSORIES



Coated-steel rotating spike with stainless steel bearings for in-ground application



Heavy-duty X-base for indoor or flat surface environments



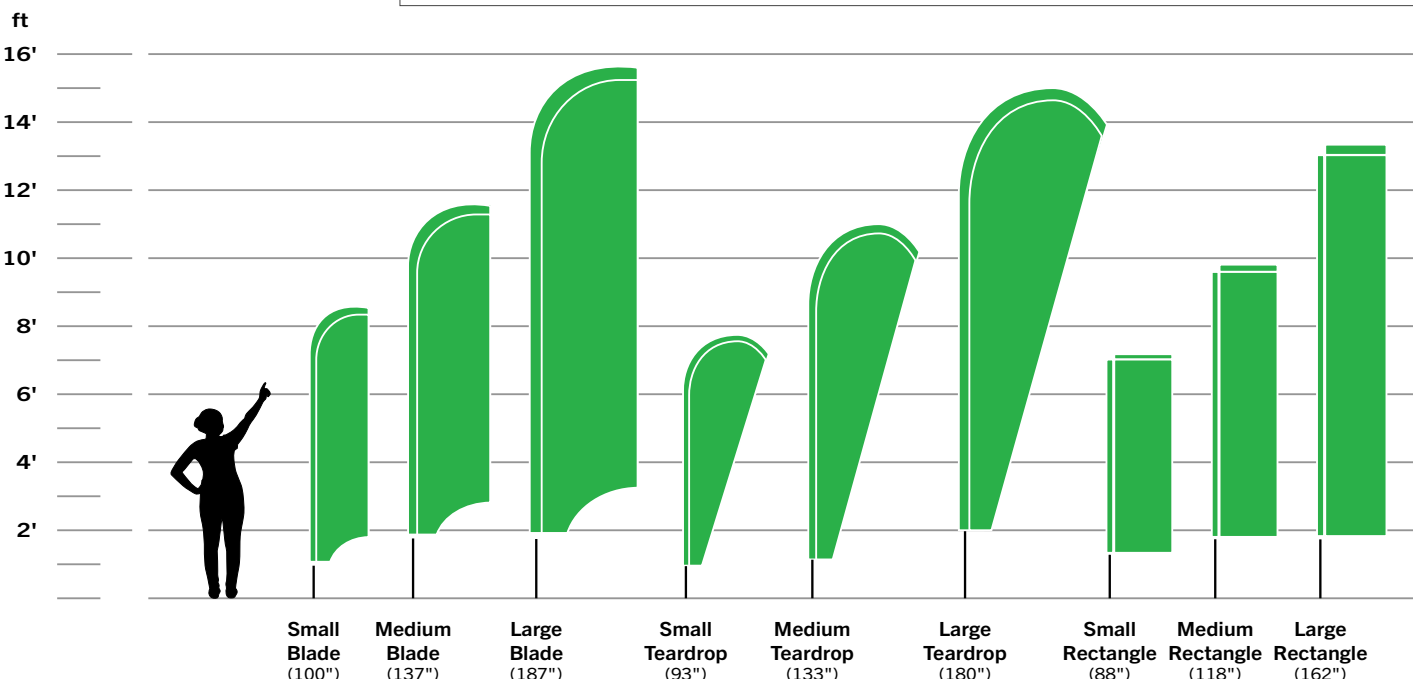
Water bag to provide additional weight (for use with X-base)



Single-sided

Double-sided

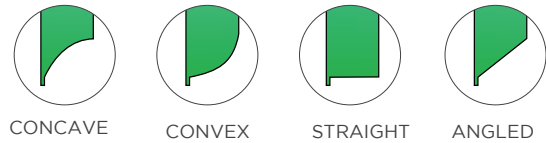
Single-sided printing is visible on both sides (mirror image on the back). Double-sided printing ensures that the graphics on both sides read properly.



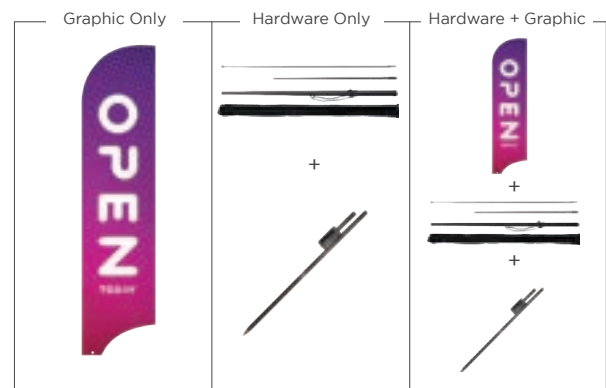
BLADE FLAG



BLADE FLAG STYLE CHOICES



By default, blade flags come in a concave style.
At your request, we can substitute any of the flag style choices above at no additional charge.



BLADE FLAG

Item	Viewable Area		Product Size with Base		Hardware			Print Only			Hardware + Print		
	W	H	W	H	1-2	3-5	6+	1-2	3-5	6+	1-2	3-5	6+
CAT-FLG-BSS Small, Single-Sided	29"	86"	32"	100"	\$100	\$96	\$90	\$95	\$93	\$90	\$196	\$185	\$175
CAT-FLG-BSD Small, Double-Sided	29"	86"	32"	100"	\$100	\$96	\$90	\$190	\$185	\$181	\$291	\$278	\$265
CAT-FLG-BMS Med, Single-Sided	32"	114"	35"	137"	\$116	\$112	\$102	\$139	\$135	\$132	\$255	\$244	\$228
CAT-FLG-BMD Med, Double-Sided	32"	114"	35"	137"	\$116	\$112	\$102	\$278	\$271	\$264	\$394	\$379	\$360
CAT-FLG-BLS Large, Single-Sided	36"	165"	39"	187"	\$128	\$122	\$118	\$229	\$223	\$218	\$358	\$342	\$330
CAT-FLG-BLD Large, Double-Sided	36"	165"	39"	187"	\$128	\$122	\$118	\$458	\$447	\$436	\$587	\$565	\$548

ACCESSORIES

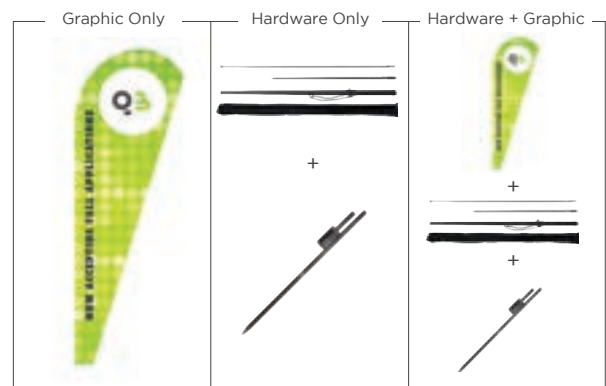
Description	Item	Hardware		
		1-2	3-5	6+
Rotating Ground Spike	CAT-FLGGS	\$38	\$34	\$32
X-Base	CAT-FLGXB	\$78	\$76	\$74
Water Bag (for X-Base)	CAT-FLGWB	\$14	\$12	\$10
Substitute X-base and Water Ballast for Spike Base		\$54	\$54	\$52



*All double-sided prints include a block out liner

OUTDOOR

TEARDROP FLAG



Item	Viewable Area		Product Size with Base		Hardware			Print Only			Hardware + Print		
	W	H	W	H	1-2	3-5	6+	1-2	3-5	6+	1-2	3-5	6+
CAT-FLG-TSS Small, Single-Sided	35"	79"	38"	93"	\$100	\$96	\$90	\$103	\$100	\$97	\$203	\$192	\$182
CAT-FLG-TSD Small, Double-Sided	35"	79"	38"	93"	\$100	\$96	\$90	\$205	\$200	\$195	\$306	\$292	\$279
CAT-FLG-TMS Med, Single-Sided	38"	119"	41"	133"	\$116	\$112	\$102	\$167	\$163	\$159	\$284	\$272	\$256
CAT-FLG-TMD Med, Double-Sided	38"	119"	41"	133"	\$116	\$112	\$102	\$335	\$327	\$318	\$451	\$435	\$415
CAT-FLG-TLS Large, Single-Sided	40"	158"	43"	180"	\$128	\$122	\$118	\$241	\$234	\$228	\$369	\$353	\$341
CAT-FLG-TLD Large, Double-Sided	40"	158"	43"	180"	\$128	\$122	\$118	\$481	\$469	\$457	\$609	\$587	\$569

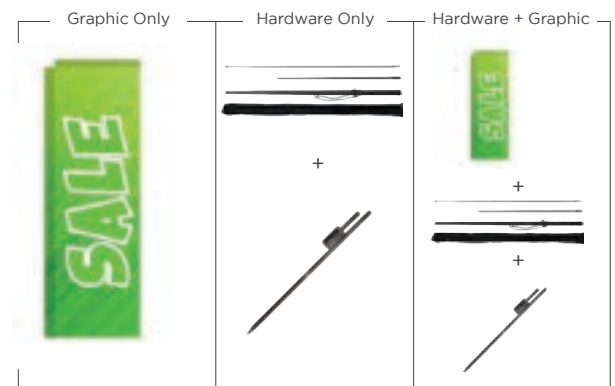
ACCESSORIES

Description	Item	Hardware		
		1-2	3-5	6+
Rotating Ground Spike	CAT-FLGGS	\$38	\$34	\$32
X-Base	CAT-FLGXB	\$78	\$76	\$74
Water Bag (for X-Base)	CAT-FLGWB	\$14	\$12	\$10
Substitute X-base and Water Ballast for Spike Base		\$54	\$54	\$52



*All double-sided prints include a block out liner

RECTANGLE FLAG



Item	Viewable Area		Product Size with Base		Hardware			Print Only			Hardware + Print		
	W	H	W	H	1-2	3-5	6+	1-2	3-5	6+	1-2	3-5	6+
CAT-FLG-RSS Small, Single-Sided	32"	69"	35"	88"	\$116	\$112	\$106	\$108	\$105	\$103	\$224	\$214	\$203
CAT-FLG-RSD Small, Double-Sided	32"	69"	35"	88"	\$116	\$112	\$106	\$216	\$211	\$205	\$332	\$319	\$306
CAT-FLG-RMS Med, Single-Sided	32"	98"	35"	118"	\$126	\$120	\$116	\$155	\$151	\$147	\$281	\$267	\$257
CAT-FLG-RMD Med, Double-Sided	32"	98"	35"	118"	\$126	\$120	\$116	\$309	\$301	\$294	\$435	\$418	\$404
CAT-FLG-RLS Large, Single-Sided	32"	140"	35"	162"	\$152	\$144	\$138	\$221	\$215	\$209	\$373	\$355	\$342
CAT-FLG-RLD Large, Double-Sided	32"	140"	35"	162"	\$152	\$144	\$138	\$441	\$430	\$419	\$593	\$570	\$551

ACCESSORIES

Description	Item	Hardware		
		1-2	3-5	6+
Rotating Ground Spike	CAT-FLGGS	\$38	\$34	\$32
X-Base	CAT-FLGXB	\$78	\$76	\$74
Water Bag (for X-Base)	CAT-FLGWB	\$14	\$12	\$10
Substitute X-base and Water Ballast for Spike Base		\$54	\$54	\$52



*All double-sided prints include a block out liner

PORTABLE BACKWALLS

WALL DISPLAYS

- Full-color dye-sublimation printing
- 280g blackout soft knit polyester fabric
- Lightweight, easy to transport
- Strong aluminum frame design
- Pre-attached Velcro
- Adjustable feet
- Carrying case included



lifetime warranty



1-year warranty on fabric



velcro



indoor



custom printing available



CAT-DPWFS43L
120" wide display shown

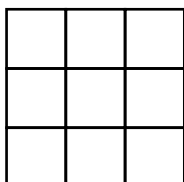


LED light kit
(Optional)

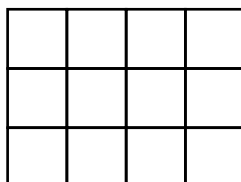
CAT-DPWFS13L
1 x 3 (Straight)
30" W x 90" H



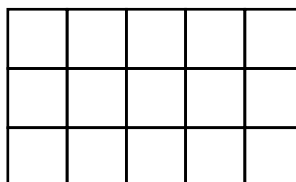
CAT-DPWFS33L
3 x 3 (Straight)
90" W x 90" H



CAT-DPFS43L or DPWFC43L
4 x 3 (Straight or Curved)
120" W x 90" H



CAT-DPWFS53L
5 x 3 (Straight or Curved)
150" W x 90" H



Note: These are rough frame dimensions. Please refer to our graphic templates for exact product dimensions.

Item	Viewable Area		Hardware Only			Print Only			Hardware + Print		
	W	H	1-2	3-5	6+	1-2	3-5	6+	1-2	3-5	6+
CAT-DPWFS13L	30"	90"	\$250	\$240	\$226	\$239	\$236	\$234	\$489	\$476	\$460
CAT-DPWFS33L	90"	90"	\$398	\$388	\$376	\$492	\$484	\$478	\$890	\$872	\$854
CAT-DPWFS43L	120"	90"	\$452	\$438	\$426	\$551	\$540	\$533	\$1003	\$978	\$959
CAT-DPWFC43L	120"	90"	\$452	\$438	\$426	\$551	\$540	\$533	\$1003	\$978	\$959
CAT-DPWFS53L	150"	90"	\$614	\$592	\$570	\$689	\$675	\$666	\$1303	\$1267	\$1236

Description	Item	Hardware
LED UL-Listed Light Kit Includes tube clamp adapter	CAT-DPULBL	\$118

Graphic pricing based on print covering the face of the frame + the side panels.

Call for graphic price of "face-only" option.

Quantity break pricing for printed items is based on multiple copies of a single art file.

For instructions on preparing and submitting artwork for printing, see inside front cover.

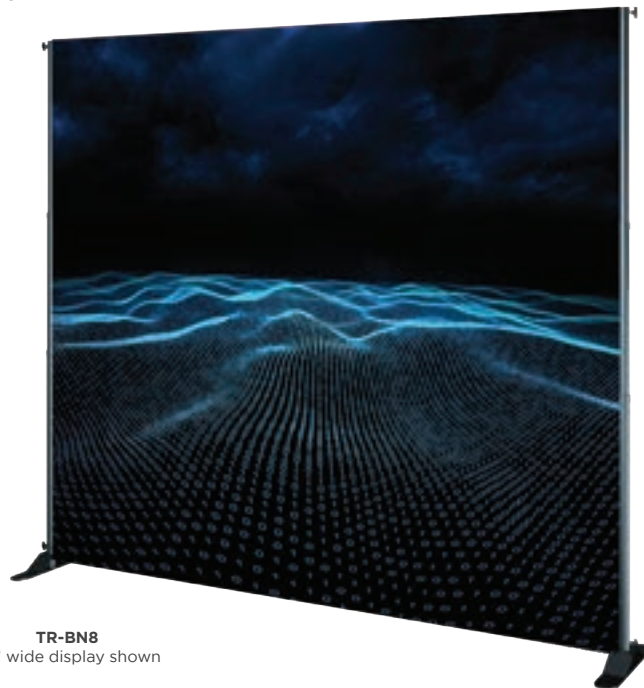
INDOOR BANNER STANDS

EXPANDABLE WALL DISPLAY

- Commonly referred to as a “step and repeat” display
- Full-color dye-sublimation printing
- 250g soft knit polyester fabric (blockout version available by request)
- Finish: Finish: **Silver** or **Black**
- Adjustable height and width
- Jumbo tubing for heavyweight graphics and vinyls



LED light kit
(Optional)



TR-BN8
96" wide display shown

Item	Finish	Veiwable Area		Hardware Only			Print Only*			Hardware + Print*		
		W	H	1-2	3-5	6+	1-2	3-5	6+	1-2	3-5	6+
144” EXPANDABLE WALL												
Standard Tubing												
TR-BN8-S	Silver	Up to 144”	Up to 144”	\$573	\$539	\$506	\$400	\$394	\$384	\$973	\$933	\$890
TR-BN8-B	Black	Up to 144”	Up to 144”	\$573	\$539	\$506	\$400	\$394	\$384	\$973	\$933	\$890
Jumbo Tubing (for Heavyweight graphics and Vinyls)												
TR-JN8-S	Silver	Up to 144”	Up to 144”	\$657	\$617	\$579	\$400	\$394	\$384	\$1,057	\$1,011	\$963
TR-JN8-B	Black	Up to 144”	Up to 144”	\$657	\$617	\$579	\$400	\$394	\$384	\$1,057	\$1,011	\$963

*Assumes full size print

Description	Item	Hardware
LED W/CLAMP FOR GRAPHIC STANDS	TR-LEDLF	\$201
39" TRAVEL BAG	TR-EBG-H	\$59
Holds one banner stand and one conversion kit		



PORTABLE BACKWALLS

TABLETOP DISPLAYS

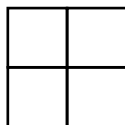
CAT-DPWFS11L
1 x 1 (Straight)
30" W x 30" H



CAT-DPWFS21L
2 x 1 (Straight)
60" W x 30" H



CAT-DPFS22L
2 x 2 (Straight or Curved)
60" W x 60" H



lifetime warranty



1-year warranty on fabric



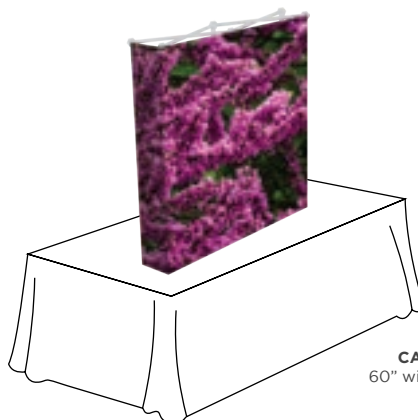
velcro



indoor



custom printing available



CAT-DPWFS22L
60" wide display shown



LED light kit
(Optional)

Item	Viewable Area		Hardware Only			Print Only			Hardware + Print		
	W	H	1-2	3-5	6+	1-2	3-5	6+	1-2	3-5	6+
CAT-DPWFS11L	30"	30"	\$144	\$132	\$122	\$141	\$139	\$138	\$285	\$271	\$260
CAT-DPWFS21L	60"	30"	\$208	\$196	\$184	\$225	\$222	\$219	\$433	\$418	\$403
CAT-DPWFS22L	60"	60"	\$250	\$240	\$230	\$275	\$269	\$263	\$525	\$509	\$493

Description	Item	Hardware
LED UL-Listed Light Kit Includes tube clamp adapter	CAT-DPULBL	\$118

POP-UP COUNTER

- Full-color dye-sublimation printing
- 280g blockout soft knit polyester fabric
- Lightweight, easy to transport
- Strong aluminum square-frame design
- Pre-attached Velcro
- Wood-grain textured laminate counter & shelves
- Adjustable feet
- Carrying case included



lifetime warranty



1-year warranty on fabric



velcro



indoor



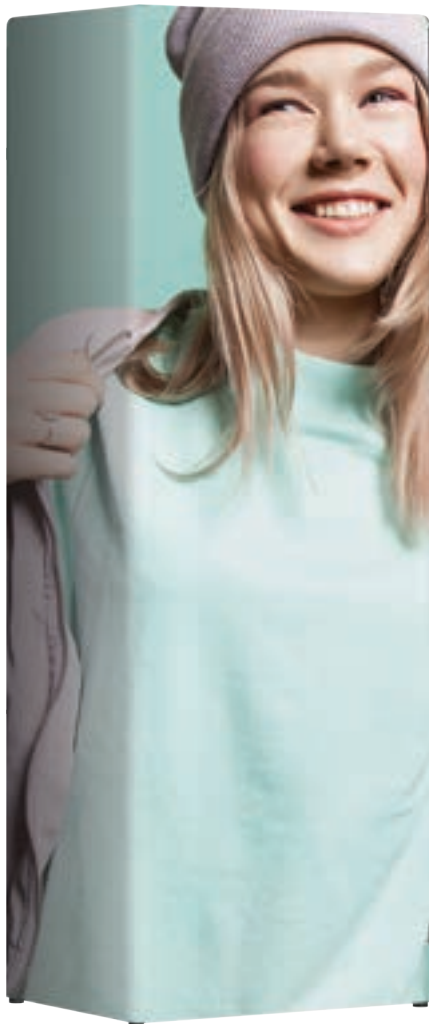
custom printing available



Item	Viewable Area		Hardware Only			Print Only			Hardware + Print		
	W	H	1-2	3-5	6+	1-2	3-5	6+	1-2	3-5	6+
CAT-DPCFS39	67"	38"	\$508	\$490	\$476	\$164	\$159	\$155	\$672	\$649	\$631

INDOOR BANNER STANDS

COLUMN STAND



- Durable
- Simple set-up
- Quick-change graphics



INCLUDED COMPONENTS



Collapsible Aluminum Frame



Durable Carrying Bag
(Frame and Top come in Different Bags)

ACCESSORIES



LED Double Stem Light



Linkable LED Light



Small Wheeled Plastic Case

(Stands must be removed from Wheeled Carrying Bag)

Outer Dimensions
17"W x 16"D x 39"H

Inner Dimensions
14"W x 11.5"D x 32.5"H

Item	W	H	Hardware		Print Only Four-Sided Wrap*		Hardware + Print Four-Sided Wrap	
			1	2-10	1	2-10	1	2-10
FIV-CS-78	24"	89.75"	\$685	\$616	\$562	\$504	\$1,247	\$1,120
FIV-CS-118	36"	89.75"	\$942	\$848	\$1,113	\$1,054	\$2,055	\$1,902

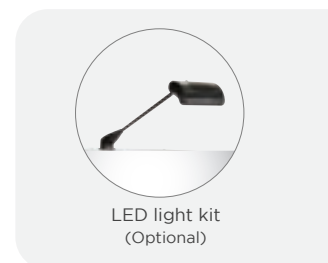
*Print includes a block-out liner

Description	Item	Hardware	
		1	2-10
Large Wheeled Trolley Case	FIV-TRLCASE-LG	\$333	\$296
Wrap for Large Wheeled Trolley Case	FIV-TRLCASE-LG-WRAP	\$140	\$134
Hard Top for Large Trolley Case*	FIV-TRLCASE-TOP	\$121	\$107
*The Hard Top only works with the Large Wheeled Trolley Case			
Small Wheeled Trolley Case	FIV-TRLCASE-SM	\$229	\$204
Linkable LED Wall Wash Light	FIV-LIGHT-LNK	\$147	\$133
Double-stem LED Light	FIV-LIGHT-DS	\$115	\$105

PORTABLE BACKWALLS

TENSION FABRIC BANNER DISPLAYS

- Simple pull-over “pillowcase” graphic installation
- Full-color dye-sublimation printing
- 240g soft knit polyester fabric (blockout version available by request)
- Single or Double-sided graphics available
- Robust 1 1/4” diameter tube structure
- Heavy-duty steel base for stability
- Carrying case included



Item	W	H	Hardware			Print Only			Hardware + Print		
			1-2	3-5	6+	1-2	3-5	6+	1-2	3-5	6+
Single-Sided Pricing is based on single-sided 90" tall graphics.											
CAT-DSTS24	24"	90"	\$142	\$134	\$130	\$135	\$133	\$131	\$277	\$267	\$261
CAT-DSTS36	36"	90"	\$158	\$150	\$146	\$180	\$177	\$174	\$338	\$327	\$320
CAT-DSTS48	48"	90"	\$214	\$208	\$202	\$225	\$221	\$218	\$439	\$429	\$420
CAT-DSTS60	60"	90"	\$252	\$244	\$236	\$263	\$257	\$253	\$515	\$501	\$489
Double-Sided Pricing is based on double-sided 90" tall graphics.											
CAT-DSTS24	24"	90"	\$142	\$134	\$130	\$158	\$155	\$154	\$300	\$289	\$284
CAT-DSTS36	36"	90"	\$158	\$150	\$146	\$214	\$210	\$208	\$372	\$360	\$354
CAT-DSTS48	48"	90"	\$214	\$208	\$202	\$270	\$266	\$263	\$484	\$474	\$465
CAT-DSTS60	60"	90"	\$252	\$244	\$236	\$319	\$313	\$309	\$571	\$557	\$545

INDOOR BANNER STANDS

TENSION FABRIC WALL DISPLAYS



CAT-DST9690
96" wide display shown

Item	W	H	Hardware			Print Only			Hardware + Print		
			1-2	3-5	6+	1-2	3-5	6+	1-2	3-5	6+
Single-Sided											
CAT-DSTW9690	96"	90"	\$426	\$404	\$384	\$420	\$411	\$405	\$846	\$815	\$789
CAT-DSTW11590	115"	90"	\$442	\$424	\$404	\$467	\$456	\$449	\$909	\$880	\$853
Double-Sided											
CAT-DSTW9690	96"	90"	\$426	\$404	\$384	\$510	\$501	\$495	\$936	\$905	\$879
CAT-DSTW11590	115"	90"	\$442	\$424	\$404	\$611	\$600	\$593	\$1,053	\$1,024	\$997

PODIUMS

OVAL FABRIC COUNTER



- Lightweight & Portable
- Simple set-up
- Quick-change graphics



INCLUDED COMPONENTS



Collapsible Podium & Black Top

ACCESSORIES



Durable Carrying Bag
(Frame and Top come in Different Bags)

Item	W	H	Hardware		Print Only Single-Sided Wrap Around		Hardware + Print Single-Sided Wrap Around	
			1	2-10	1	2-10	1	2-10
FIV-FCO-33	20"	33"	\$192	\$173	\$159	\$150	\$351	\$323

Description	Item	Hardware	
		1	2-10
Large Wheeled Trolley Case	FIV-TRLCASE-LG	\$333	\$296
Wrap for Large Trolley Case	FIV-TRLCASE-LG-WRAP	\$140	\$134
Hard Top for Large Trolley Case	FIV-TRLCASE-TOP	\$121	\$107

Load Weights

(Evenly Distributed)

Counter Top: 35 lbs.

Counter Top Dimensions:

19.5" W x 13" D

RECTANGLE FABRIC COUNTER



- Lightweight & Portable
- Simple set-up
- Quick-change graphics



INCLUDED COMPONENTS



Collapsible Podium & Black Top

ACCESSORIES



Durable Carrying Bag
(Frame and Top come in Different Bags)

Item	W	H	Hardware		Print Only Single-Sided Wrap Around		Hardware + Print Single-Sided Wrap Around	
			1	2-10	1	2-10	1	2-10
FIV-FCR-33	20"	33"	\$290	\$261	\$212	\$201	\$503	\$462

Description	Item	Hardware	
		1	2-10
Large Wheeled Trolley Case	FIV-TRLCASE-LG	\$333	\$296
Wrap for Large Trolley Case	FIV-TRLCASE-LG-WRAP	\$140	\$134
Hard Top for Large Trolley Case	FIV-TRLCASE-TOP	\$121	\$107

Load Weights (Evenly Distributed)

Counter Top: 35 lbs.

**Counter Top
Dimensions:**
26.25" W x 17.25" D

TOWER STAND

PREMIUM X-TENSION

- Refined aluminum body with fiberglass upright rods
- Quick and easy setup
- Finish: **Silver**
- Carrying bag included (CAT-DXS32)



lifetime warranty

indoor

custom printing available



Item	Finish	Viewable Area		Hardware Only			Print Only			Hardware + Print		
		W	H	1-2	3-5	6+	1-2	3-5	6+	1-2	3-5	6+
CAT-DXS32	Silver	31.5"	75"	\$60	\$58	\$56	\$82	\$82	\$82	\$142	\$140	\$138
CAT-DXS8511	Silver	8.5"	11"	\$12	\$10	\$8	\$32	\$32	\$32	\$44	\$42	\$40
CAT-DXS1117	Silver	11"	17"	\$14	\$12	\$10	\$32	\$32	\$32	\$46	\$44	\$42

HANGING BANNER

- Matching front and back profile
- Each set (2 rails) includes hanging hooks
- Graphic is held with top and bottom clamp rails
- Finish: **Silver**

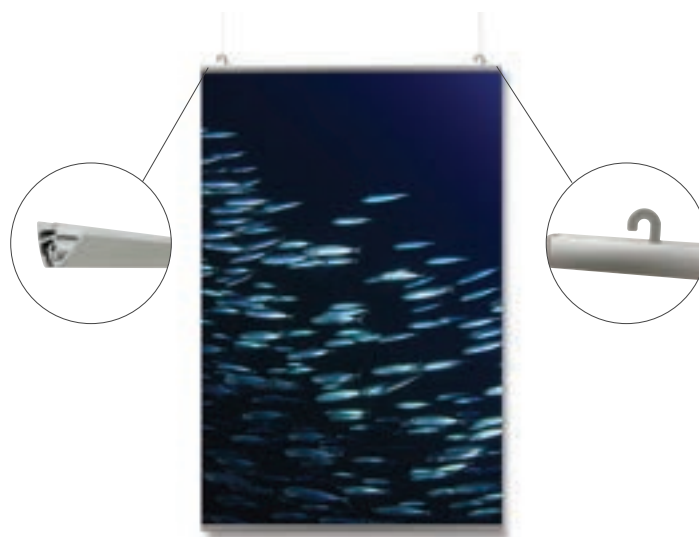


lifetime warranty

indoor

adjustable height

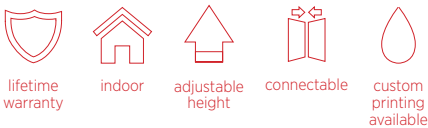
custom printing available



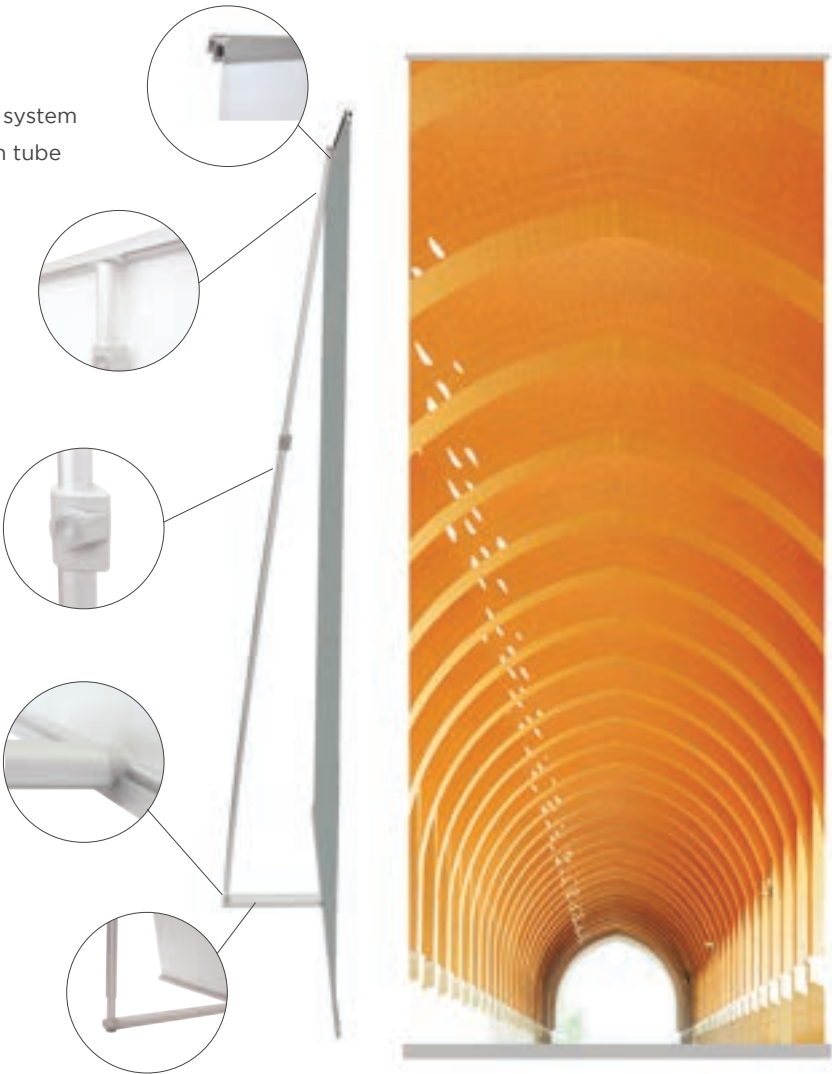
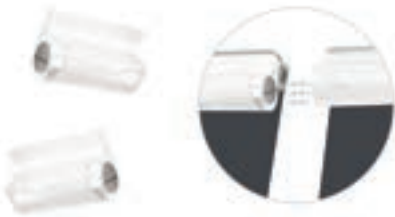
Item	Finish	Viewable Area		Hardware Only			Print Only			Hardware + Print		
		W	H	1-2	3-5	6+	1-2	3-5	6+	1-2	3-5	6+
CAT-DHCS24	Silver	23.5"	36"	\$30	\$28	\$26	\$62	\$60	\$59	\$92	\$88	\$85
CAT-DHCS34	Silver	33.5"	48"	\$40	\$36	\$34	\$117	\$114	\$112	\$157	\$150	\$146
CAT-DHCS48	Silver	47.25"	60"	\$54	\$50	\$46	\$207	\$202	\$197	\$261	\$252	\$243

PREMIUM L-TENSION

- Adjustable height
- Finish: **Silver**
- Graphic is held with top and bottom clamp rail system
- Carrying case included, with graphic protection tube



(Optional)
MAGNETIC TOP CLAMP CONNECTOR
CAT-DRAMCS



Item	Finish	Veiwable Area		Hardware Only			Print Only			Hardware + Print		
		W	H	1-2	3-5	6+	1-2	3-5	6+	1-2	3-5	6+
CAT-DLS15	Silver	15"	33.5"	\$54	\$50	\$46	\$42	\$40	\$38	\$96	\$90	\$84
CAT-DLS24	Silver	23.5"	85"	\$70	\$66	\$60	\$76	\$76	\$76	\$146	\$142	\$136
CAT-DLS34	Silver	33.5"	85"	\$82	\$78	\$70	\$99	\$99	\$99	\$181	\$177	\$169

Description	Item	Hardware 1
Magnetic Top Clamp Connector	CAT-DRAMCS	\$15

SHAPES

ARCH



- Durable
- Simple set-up
- Quick-change graphics



lifetime
warranty



indoor



custom
printing
available

INCLUDED COMPONENTS



Collapsible Aluminum Frame



Durable Carrying Bag

(Frame and Top
come in Different Bags)

ACCESSORIES



Small Wheeled Plastic Case

(Stands must be removed
from Wheeled Carrying Bag)

Outer Dimensions
17"W x 16"D x 39"H

Inner Dimensions
14"W x 11.5"D x 32.5"H

Item	W	H	Hardware		Print Only Single-Sided*		Print Only Double-Sided*		Hardware + Print Single-Sided		Hardware + Print Double-Sided*	
			1	2-10	1	2-10	1	2-10	1	2-10	1	2-10
FIV-ARCH-106	106"	90"	\$572	\$515	\$1,000	\$966	\$1,242	\$1,179	\$1,573	\$1,481	\$2,242	\$2,145

Description	Item	Hardware	
		1	2-10
Large Wheeled Trolley Case	FIV-TRLCASE-LG	\$333	\$296
Wrap for Large Trolley Case	FIV-TRLCASE-LG-WRAP	\$140	\$134
Hard Top for Large Trolley Case*	FIV-TRLCASE-TOP	\$121	\$107
*The Hard Top only works with the Large Wheeled Trolley Case			
Small Wheeled Trolley Case	FIV-TRLCASE-SM	\$229	\$204

PORTABLE BACKWALLS

CUSTOM BANNERS & BACKDROPS

- Full-color dye-sublimation printing
- 250g soft knit polyester fabric (blockout available by request)
- Multiple finishing options available (pole pocket, grommet, hemmed edge, and Velcro)
- Double-sided option available
- Any custom size can be produced



1-year
warranty
on fabric



outdoor



indoor



custom
printing
available



Call For Pricing on Your Custom Size
CAT-DSUBBD

CUSTOM CONCEPTS



Concept 10-1

114.98" W x 95.78" H

Walls / Panels

Infinity Sloped - OP-C4	1
Infinity Sloped - OP-A4	1

Graphics

Infinity Sloped- OP-C4 - SR- 1 sided	1
Infinity Sloped- OP-C4 - SL- 1 sided	1
Infinity Travel Case Counter Graphic	1

Accessories

ST - 5 Left	1
Monitor Bracket	1
Infinity Travel Case Counter	1
Slimline LED Wall Wash	1
35mm Light Clamp	1
35mm S Clip	1

Concept 10-2

114.98" W x 95.78" H

Walls / Panels

Infinity Arched - OP-C5	1
Infinity Sloped - OP-A4	1

Graphics

Infinity Arched - OP-C5 - 1 sided	1
Infinity Sloped- OP-A4 - SL- 1 sided	1
Infinity Travel Case Counter Graphic	1

Accessories

ST - 5 Left	1
Monitor Bracket	1
Infinity Travel Case Counter	1
Slimline LED Wall Wash	1
35mm Light Clamp	1
35mm S Clip	1



Concept 10-3

114.98" W x 91.06" H

Walls / Panels

Infinity Flat - OP-A1	1
Infinity Flat - OP-C1	1

Graphics

Infinity Flat - OP-A1 - 1 sided	1
Infinity Flat - OP-C1 - 1 sided	1
Infinity Travel Case Counter Graphic	1

Accessories

ST - 5 Left	1
Monitor Bracket	1
Infinity Travel Case Counter	1
Slimline LED Wall Wash	3
35mm Light Clamp	3
35mm S Clip	1





Concept 10-4

114.98" W x 95.78" H

Walls / Panels

Infinity Flat - OP-C1	1
Infinity Sloped - OP-A4	1

Graphics

Infinity Flat - OP-C1 - 1 sided	1
Infinity Sloped- OP-C4 - SL- 1 sided	1
Infinity Travel Case Counter Graphic	1

Accessories

ST - 5 Left	1
Monitor Bracket	1
Infinity Travel Case Counter	1
Slimline LED Wall Wash	2
35mm Light Clamp	2
35mm S Clip	1

Concept 10-5

114.98" W x 95.78" H

Walls / Panels

Infinity Sloped - OP-C4	1
Infinity Flat - OP-A1	1

Graphics

Infinity Sloped - OP-C4 - SR - 1 sided	1
Infinity Flat - OP-A1 - 1 sided	1
Infinity Travel Case Counter Graphic	1

Accessories

ST - 5 Left	1
Monitor Bracket	1
Infinity Travel Case Counter	1
Slimline LED Wall Wash	3
35mm Light Clamp	3
35mm S Clip	1



Concept 10-6

114.98" W x 95.78" H

Walls / Panels

Infinity Sloped - OP-A4	1
Infinity Lip - OP-A6	1
Infinity Flat - OP-C1	1
Infinity Lip - OP-A6	1
Infinity Sloped - OP-A4	1

Graphics

Infinity Sloped - OP-A4 - SR - 1 sided 1	
Infinity Lip - OP-A6 - 1 sided	1
Infinity Flat - OP-C1 - 1 sided	1
Infinity Lip - OP-A6 - 1 sided	1
Infinity Sloped - OP-A4 - SL - 1 sided 1	1
Infinity Travel Case Counter Graphic 2	2

Accessories

ST - 6 Right	1
ST - 5 Left	1
Monitor Bracket	2
Infinity Travel Case Counter	2
Slimline LED Wall Wash	4
35mm Light Clamp	4
35mm S Clip	4



CUSTOM CONCEPTS



Concept 10-7

114.98" W x 95.78" H

Walls / Panels

Infinity Sloped - OP-C4	1
Infinity Lip - OP-A6	1

Graphics

Infinity Sloped - OP-C4 - SR - 1 sided	1
Infinity Lip - OP-A6 - 1 sided	1
Infinity Travel Case Counter Graphic	1

Accessories

ST - 5 Left	1
Monitor Bracket	1
Infinity Travel Case Counter	1
Slimline LED Wall Wash	1
35mm Light Clamp	1
35mm S Clip	1

Concept 10-8

114.98" W x 95.78" H

Walls / Panels

Infinity Flat - OP-C1	1
Infinity Lip - OP-A6	1

Graphics

Infinity Flat - OP-C1 - 1 sided	1
Infinity Lip - OP-A6 - 1 sided	1
Infinity Travel Case Counter Graphic	1

Accessories

ST - 5 Left	1
Monitor Bracket	1
Infinity Travel Case Counter	1
Slimline LED Wall Wash	1
35mm Light Clamp	1
35mm S Clip	1



Concept 10-9

114.98" W x 95.78" H

Walls / Panels

Infinity Arched - OP-C5	1
Infinity Lip - OP-A6	1

Graphics

Infinity Arched - OP-C5 - 1 sided	1
Infinity Lip - OP-A6 - 1 sided	1
Infinity Travel Case Counter Graphic	1

Accessories

ST - 5 Left	1
Monitor Bracket	1
Infinity Travel Case Counter	1
Slimline LED Wall Wash	1
35mm Light Clamp	1
35mm S Clip	1





Concept 20-1

226.83" W x 95.75" H

Walls / Panels

Infinity Flat - OP-A1	1
Infinity Sloped - OP-C4	1
Infinity Sloped - OP-C4	1
Infinity Flat - OP-A1	1

Graphics

Infinity Flat - OP-A1 - 1 sided	1
Infinity Sloped - OP-C4 - SR - 1 sided	1
Infinity Sloped - OP-C4 - SR - 1 sided	1
Infinity Flat - OP-A1 - 1 sided	1
Infinity Travel Case Counter Graphic	2

Accessories

ST - 6 Right	1
ST - 5 Left	1
Monitor Bracket	2
Infinity Travel Case Counter	2
Slimline LED Wall Wash	6
35mm Light Clamp	6
35mm S Clip	3

Concept 20-2

229.96" W x 95.78" H

Walls / Panels

Infinity Arched - OP-C5	1
Infinity Flat - OP-C1	1
Infinity Arched - OP-C5	1

Graphics

Infinity Arched - OP-C5 - 1 sided	1
Infinity Flat - OP-C1 - 1 sided	1
Infinity Arched - OP-C5 - 1 sided	1
Infinity Travel Case Counter Graphic 2	2

Accessories

ST - 6 Right	1
ST - 5 Left	1
Monitor Bracket	1
Infinity Travel Case Counter	2
Slimline LED Wall Wash	4
35mm Light Clamp	4
35mm S Clip	2



Concept 20-3

223.70" W x 95.78" H

Walls / Panels

Infinity Sloped - OP-A4	1
Infinity Lip - OP-A6	1
Infinity Flat - OP-C1	1
Infinity Lip - OP-A6	1
Infinity Sloped - OP-A4	1

Graphics

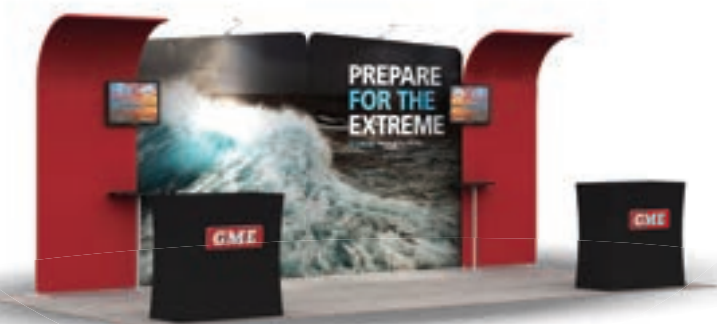
Infinity Sloped - OP-A4 - SR - 1 sided	1
Infinity Lip - OP-A6 - 1 sided	1
Infinity Flat - OP-C1 - 1 sided	1
Infinity Lip - OP-A6 - 1 sided	1
Infinity Sloped - OP-A4 - SL - 1 sided	1
Infinity Travel Case Counter Graphic	2

Accessories

ST - 6 Right	1
ST - 5 Left	1
Monitor Bracket	2
Infinity Travel Case Counter	2
Slimline LED Wall Wash	4
35mm Light Clamp	4
35mm S Clip	4



CUSTOM CONCEPTS



Concept 20-4

226.83" W x 95.78" H

Walls / Panels

Infinity Lip - OP-A6	1
Infinity Sloped - OP-C4	1
Infinity Sloped - OP-C4	1
Infinity Lip - OP-A6	1

Graphics

Infinity Lip - OP-A6 - 1 sided	1
Infinity Sloped - OP-C4 - SL - 1 sided 1	1
Infinity Sloped - OP-C4 - SR - 1 sided 1	1
Infinity Lip - OP-A6 - 1 sided	1
Infinity Travel Case Counter Graphic 2	2

Accessories

ST - 6 Right	1
ST - 5 Left	1
Monitor Bracket	2
Infinity Travel Case Counter	2
Slimline LED Wall Wash	2
35mm Light Clamp	2
35mm S Clip	3

Concept 20-5

223.70" W x 95.78" H

Walls / Panels

Infinity Arched - OP-A5	1
Infinity Lip - OP-A6	1
Infinity Arched - OP-C5	1
Infinity Lip - OP-A6	1
Infinity Arched - OP-A5	1

Graphics

Infinity Arched - OP-A5 - 1 sided	1
Infinity Lip - OP-A6 - 1 sided	1
Infinity Arched - OP-C5 - 1 sided	1
Infinity Lip - OP-A6 - 1 sided	1
Infinity Arched - OP-A5 - 1 sided	1
Infinity Travel Case Counter Graphic 2	2

Accessories

ST - 6 Right	1
ST - 5 Left	1
Monitor Bracket	2
Infinity Travel Case Counter	2
Slimline LED Wall Wash	4
35mm Light Clamp	4
35mm S Clip	4



Concept 20-6

190.59" W x 95.78" H

Walls / Panels

Infinity Arched - OP-C5	1
Infinity Lip - OP-A6	1
Infinity Arched - OP-C5	1

Graphics

Infinity Arched - OP-C5 - 1 sided	1
Infinity Lip - OP-A6 - 1 sided	1
Infinity Arched - OP-C5 - 1 sided	1
Infinity Travel Case Counter Graphic 2	2

Accessories

ST - 6 Right	1
ST - 5 Left	1
Monitor Bracket	2
Infinity Travel Case Counter	2
Slimline LED Wall Wash	2
35mm Light Clamp	2
35mm S Clip	2





Concept 20-7

90.59" W x 95.78" H

Walls / Panels

Infinity Arched - OP-C5	1
Infinity Arched - OP-C5	1
Infinity Arched - OP-C5	1

Graphics

Infinity Arched- OP-C5 - SR- 1 sided	1
Infinity Arched- OP-C5 - SR- 1 sided	1
Infinity Arched- OP-C5 - SR- 1 sided	1

Accessories

ST - 6 Right	1
ST - 5 Left	1
Monitor Bracket	2
Infinity Travel Case Counter	2
Slimline LED Wall Wash	1
35mm Light Clamp	3
35mm S Clip	2

Concept 20-8

226.83" W x 95.78" H

Walls / Panels

Infinity Sloped - OP-A4	1
Infinity Sloped - OP-C4	1
Infinity Sloped - OP-C4	1
Infinity Sloped - OP-A4	1

Graphics

Infinity Sloped - OP-A5 - 1 sided	1
Infinity Sloped - OP-A6 - 1 sided	1
Infinity Sloped - OP-C5 - 1 sided	1
Infinity Sloped - OP-A6 - 1 sided	1

Accessories

ST - 6 Right	1
ST - 5 Left	1
Monitor Bracket	2
Infinity Travel Case Counter	2
Slimline LED Wall Wash	2
35mm Light Clamp	2
35mm S Clip	3



Concept 20-9

234.8" W x 95.78" H

Walls / Panels

Infinity Straight Wall 20'	1
Infinity Wing- OP-W1	2

Graphics

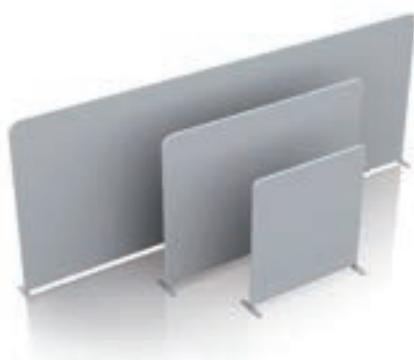
Infinity Straight Wall 20' - 1 sided	1
1 sided- Wide Top / Left Straight	1
1 sided- Narrow Top / Right Straight	1

Accessories

Slimline LED Wall Wash	4
35mm Light Clamp	4

INFINITY SERIES BACKWALLS

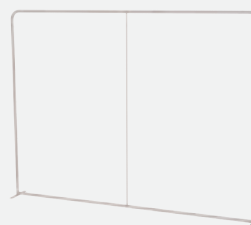
STRAIGHT WALL



- Durable
- Simple set-up



INCLUDED COMPONENTS



Frame and Feet



Storage Bag

ACCESSORIES



Slim Line LED



Small Wheeled Case



Travel Case Counter



Item	W	H	Hardware		Print Only Single-Sided		Print Only Double-Sided*		Hardware + Print Single-Sided		Hardware + Print Double-Sided*	
			1	2-10	1	2-10	1	2-10	1	2-10	1	2-10
FIV-SW-8	96"	90"	\$360	\$320	\$721	\$691	\$1,021	\$991	\$1,081	\$1,011	\$1,382	\$1,312
FIV-SW-10	115"	90"	\$396	\$352	\$864	\$828	\$1,224	\$1,188	\$1,260	\$1,180	\$1,620	\$1,540
FIV-SW-20	234"	115"	\$650	\$578	\$1,762	\$1,689	\$2,497	\$2,423	\$2,412	\$2,266	\$3,146	\$3,001

*All double-sided prints include a block-out liner

Description	Item	Hardware	
		1	2-10
Infinity Travel Case Counter	FIV-INFINITYCASE	\$506	\$454
Wrap for Infinity Travel Case	FIV-INFINITYCASE-WRAP	\$269	\$254
Small Wheeled Trolley Case	FIV-TRLCASE-SM	\$229	\$204
Linkable LED Wall Wash Light	FIV-LIGHT-LNK	\$147	\$133

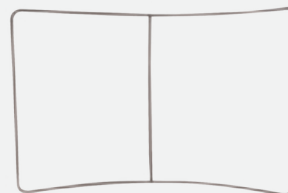
HC WALL



- Durable
- Simple set-up



INCLUDED COMPONENTS



Frame and Feet



Storage Bag

ACCESSORIES



Slim Line LED



Small Wheeled Case



Travel Case Counter



Item	W	H	Hardware		Print Only Single-Sided		Print Only Double-Sided*		Hardware + Print Single-Sided		Hardware + Print Double-Sided*	
			1	2-10	1	2-10	1	2-10	1	2-10	1	2-10
FIV-HC-8	96"	90"	\$252	\$224	\$677	\$744	\$1,100	\$1,068	\$928	\$968	\$1,352	\$1,292
FIV-HC-10	118"	90"	\$279	\$248	\$970	\$929	\$1,374	\$1,334	\$1,249	\$1,177	\$1,653	\$1,582
FIV-HC-20	236"	90"	\$518	\$461	\$1,949	\$1,868	\$2,761	\$2,680	\$2,467	\$2,328	\$3,279	\$3,140

*All double-sided prints include a block-out liner

Description	Item	Hardware	
		1	2-10
Infinity Travel Case Counter	FIV-INFINITYCASE	\$506	\$454
Wrap for Infinity Travel Case	FIV-INFINITY-CASE-WRAP	\$269	\$254
Small Wheeled Trolley Case	FIV-TRLCASE-SM	\$229	\$204
Linkable LED Wall Wash Light	FIV-LIGHT-LNK	\$147	\$133

INFINITY SERIES BACKWALLS

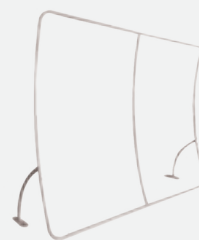
VC WALL



- Durable
- Simple set-up



INCLUDED COMPONENTS



Frame and Feet



Storage Bag

ACCESSORIES



Slim Line LED



Small Wheeled Case



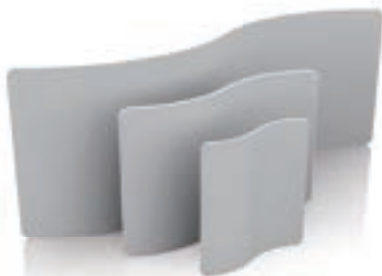
Travel Case Counter

Item	W	H	Hardware		Print Only Single-Sided		Print Only Double-Sided*		Hardware + Print Single-Sided		Hardware + Print Double-Sided*	
			1	2-10	1	2-10	1	2-10	1	2-10	1	2-10
FIV-VC-8	96"	90"	\$328	\$291	\$732	\$702	\$1,037	\$1,007	\$1,060	\$993	\$1,365	\$1,298
FIV-VC-10	118"	90"	\$366	\$326	\$904	\$866	\$1,281	\$1,243	\$1,270	\$1,192	\$1,647	\$1,569
FIV-VC-20	236"	90"	\$586	\$521	\$1,808	\$1,733	\$2,561	\$2,486	\$2,394	\$2,253	\$3,147	\$3,007

*All double-sided prints include a block-out liner

Description	Item	Hardware	
		1	2-10
Infinity Travel Case Counter	FIV-INFINITYCASE	\$506	\$454
Wrap for Infinity Travel Case	FIV-INFINITYCASE-WRAP	\$269	\$254
Small Wheeled Trolley Case	FIV-TRLCASE-SM	\$229	\$204
Linkable LED Wall Wash Light	FIV-LIGHT-LNK	\$147	\$133

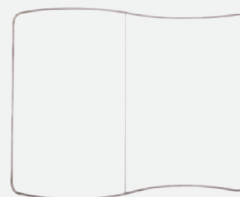
WAVE WALL



- Durable
- Simple set-up



INCLUDED COMPONENTS



Frame and Feet



Storage Bag

ACCESSORIES



Slim Line LED



Small Wheeled Case



Travel Case Counter

Item	W	H	Hardware		Print Only Single-Sided		Print Only Double-Sided*		Hardware + Print Single-Sided		Hardware + Print Double-Sided*	
			1	2-10	1	2-10	1	2-10	1	2-10	1	2-10
FIV-WW-8	91"	90"	\$261	\$232	\$776	\$744	\$1,099	\$1,067	\$1,037	\$975	\$1,360	\$1,299
FIV-WW-10	118"	90"	\$288	\$256	\$977	\$937	\$1,385	\$1,144	\$1,266	\$1,193	\$1,673	\$1,400
FIV-WW-20	235"	90"	\$486	\$432	\$1,942	\$1,862	\$2,752	\$2,671	\$2,429	\$2,294	\$3,238	\$3,103

*All double-sided prints include a block-out liner

Description	Item	Hardware	
		1	2-10
Infinity Travel Case Counter	TRLCASE-CTR	\$506	\$454
Wrap for Infinity Travel Case	TRLCASE-CTR-WRAP	\$269	\$254
Small Wheeled Trolley Case	TRLCASE-SM	\$229	\$204
Linkable LED Wall Wash Light	LIGHT-LNK	\$147	\$133

INFINITY ACCESSORIES

FLAT toolless

FIV-OP-A1
Starting at \$468



Height	89.75"
Width	39.5"

FIV-OP-C1
Starting at \$793



Height	89.75"
Width	78.75"

ARCHED toolless

FIV-OP-A5
Starting at \$465



Height 1	95.75"
Height 2	89.75"
Width	39.5"

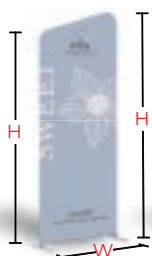
FIV-OP-C5
Starting at \$833



Height 1	95.75"
Height 2	89.75"
Width	78.75"

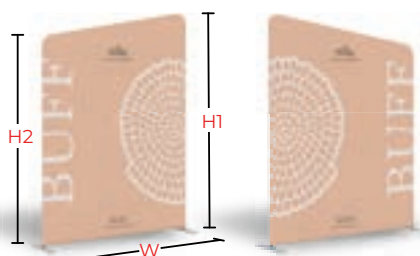
SLOPED toolless

FIV-OP-A4
Starting at \$413 each



Height 1	95.75"
Height 2	89.75"
Width	39.5"

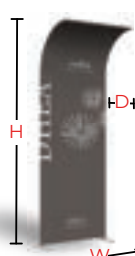
FIV-OP-C4
Starting at \$875 each



Height 1	95.75"
Height 2	89.75"
Width	78.75"

LIP toolless

FIV-OP-A6
Starting at \$570



Height	89.75"
Width	39.5"
Depth	19"

WING

FIV-OP-W1
Starting at \$614 each

 toolless

Height	95"
Width 1	49"
Width 2	28"

*Not free standing.
Must attach to a wall.



INCLUDED COMPONENTS



Frame and Feet



Storage Bag

**All products
include hardware +
single-sided print**

STAND OFFS

FIV-SO-1

Starting at \$661



INCLUDES

- 3 Display Shelves
- Monitor Mount*
- *monitor not included

FRAME DIMENSIONS

Width	28"
Height	90"
Depth	12"
Weight	35lbs.

SHELF DIMENSIONS

Width	25"
Height	11.5"

*Stand Offs only connect to Straight Walls and Flat Panels

FIV-SO-2

Starting at \$585



INCLUDES

- 2 Display Shelves
- Monitor Mount*
- *monitor not included

FRAME DIMENSIONS

Width	28"
Height	90"
Depth	12"
Weight	35lbs.

SHELF DIMENSIONS

Width	25"
Height	11.5"

*Stand Offs only connect to Straight Walls and Flat Panels

FIV-SO-3

Starting at \$508



INCLUDES

- 1 Display Shelf
- 1 Hanger Rack
- Monitor Mount*
- *monitor not included

FRAME DIMENSIONS

Width	28"
Height	90"
Depth	12"
Weight	35lbs.

SHELF DIMENSIONS

Width	25"
Height	11.5"

*Stand Offs only connect to Straight Walls and Flat Panels

FIV-SO-4

Starting at \$565



INCLUDES

- 1 Display Shelves
- Monitor Mount*
- *monitor not included

FRAME DIMENSIONS

Width	28"
Height	90"
Depth	14"
Weight	35lbs.

SHELF DIMENSIONS

Width	25"
Height	11.5"

*Stand Offs only connect to Straight Walls and Flat Panels

SIDE TABLES

FIV-SO-5 Left

Starting at \$230



FRAME DIMENSIONS

Height	25"
--------	-----

TABLE TOP DIMENSIONS

Width	26"
Depth	11"

FIV-SO-6 Right

Starting at \$230



FRAME DIMENSIONS

Height	25"
--------	-----

TABLE TOP DIMENSIONS

Width	26"
Depth	11"

INFINITY ACCESSORIES

LIGHTS / CLAMPS



Slimline LED Wall Wash		Linkable LED Wall Wash		Double Stem Light		Infinity Light Clamp (1.25" tube)		35mm S-Clip		Single Wall Monitor Bracket		Double Wall Monitor Bracket	
1	2-10	1	2-10	1	2-10	1	2-10	1	2-10	1	2-10	1	2-10
\$175	\$155	\$147	\$133	\$115	\$133	\$8	\$7	\$23	\$20	\$86	\$77	\$115	\$102

FEET



Removable center post



Removable center post

Single Post				2 or 3 Post - Right Center				2 or 3 Post - Left Center			
W	L	1	2-10	W	L	1	2-10	W	L	1	2-10
2"	18"	\$29	\$26	3"	19"	\$50	\$44	3"	19"	\$50	\$44

CASES



Small Wheeled Trolley Case

Outer Dimensions		
H	W	D
38.5"	16.5"	15"

Inner Dimensions		
H	W	D
35.5"	14"	12"

1	2-10
\$229	\$204

Infinity Travel Case Counter

Outer Dimensions		
H	W	D
38.5"	19.5"	13"

Inner Dimensions		
H	W	D
35"	17.5"	10"

	1	2-10
Case	\$506	\$455
Case Wrap	\$269	\$254

Large Molded Case

Outer Dimensions		
H	W	D
67"	24"	11"

Inner Dimensions		
H	W	D
65"	22"	9.5"

\$960

Medium Molded Case

Outer Dimensions		
H	W	D
55"	27.5"	11"

Inner Dimensions		
H	W	D
53"	25.5"	10"

\$819

Small Molded Case

Outer Dimensions		
H	W	D
54.5"	17"	13.5"

Inner Dimensions		
H	W	D
53"	15"	12"

\$800

A-FRAMES

DELUXE A-FRAME KIT



- Molded handle for easy transport.
- Weather resistant and maintenance free.
- Fill with sand for stability when outside.
- Molded handle for transportation and hinges lock into place.
- Designed for temporary outdoor installations at retail locations and events.
- Hardware available in black or white.
- Kit includes hardware and 2 single-sided panels.
- Printed on 4mm Corrugated Plastic.
- Frame size: 27" W x 48.375" H



1-year
warranty
on fabric



custom
printing
available



outdoor

Item	Finish	W	H	Print Only (Each Panel)			Hardware + Print (Includes 2 Panels)		
				1-2	3-5	6+	1-2	3-5	6+
VG-DS-AFM-KIT	Black or White	24"	36"	\$57	\$54	\$51	\$265	\$254	\$240

*Starting price on corrugated plastic. Prices may vary based on sign material and add-on options.
We recommend adding .125" of bleed to all sides of your graphic. **For greater quantities, call or shop online.

PROMOTIONAL PRODUCTS

STOCK YOUR BOOTH WITH GREAT PROMOTIONAL PRODUCTS!



The Marquis Stylus Pen
Item #TZCQL-LUBSU



Tuscany™ Journal
Item #RGGNL-ICRPI

Faux Leather Pen Cup Set With
Cashews or Chocolate Almonds
Item #GAGQM-LYPER



Golf Ball Stress Ball
Item #VBBKS-EJBXZ

RTIC Tumbler 30oz
Item #KECQO-LYIRN



Clipper Hand Sanitizer
Item #PGFOQ-IUWUZ



UL Listed Aluminum 2200 Mah Lithium
Ion Portable Power Bank Charger
Item #TEGMP-KYTQU



12oz Java Two Tone Mugs
Item #FGHKR-MENHA

Tradeshow Swag
Branded Gifts Catalog, pg 9



8 GB Swivel USB Drive
Item #YCFSL-GAVYY



With a catalog of over **25,000** brandable products, if you can imagine it, we can provide it.

Ordering is easy. ***Find your product. Contact us. That's it.***

VisionDoesIt.com/Promo
info@visiondoesit.com

PROMOTIONAL PRODUCTS

LET VISION GRAPHICS OUTFIT YOUR TEAM WITH LOGOED APPAREL

Give your employees apparel they want to wear. We offer shirts, polos, sweaters, jackets, coats, hats, backpacks & bags. We have high-end brands for your executives and great choices for everyone on your team.

Decoration methods include:

- Embroidery
- Heat transfer
- Screen print
- Dimensional graphics
- Dye sublimation
- Patches



FOR MORE INFORMATION,
CONTACT US: info@visiondoesit.com

OVERHEAD DISPLAYS CATALOG

THE **SKY** IS THE LIMIT FOR YOUR TRADESHOW PRESENCE!

Attract eyes to your booth and be visible across the aisles with a quality overhead display.

- Options in all shapes and sizes
- Full-color graphics, custom printed
- Static and rotating displays

Download the Overhead Displays catalog:

VisionDoesIt.com/Display

**FOR MORE INFORMATION,
CONTACT US: info@visiondoesit.com**



Value Circle
Overhead Displays
Catalog pg. 02

DESIGN SERVICES

LET YOUR GRAPHICS STAND OUT!

Get results with great design!
Professional design reinforces your brand and offers an exciting customer experience. Our design team consistently delivers beautiful, fun designs that create a lasting impression and help you generate new business.

Contact our design team to set up a consultation on your next project!

info@visiondoesit.com



FOR SPECIFICATIONS & DESIGN TEMPLATES ONLINE:

VisionDoesIt.com/Templates

TO ORDER

Call us at **801.973.8929**

Email us at **info@visiondoesit.com**

Most orders ship within 72 hours. Call us for rush orders or larger quantities.
100% Money-Back Satisfaction Guarantee. "We're happy when you're happy!"



**VISION
GRAPHICS**
LOOK GOOD. BE SEEN.

2525 SOUTH 900 WEST
SALT LAKE CITY, UTAH 84119

PRINT SERVICES

Large Format

- Banners & Banner Stands
- Floor & Window Graphics
- Way-finding Signage
- Interior Décor
- Stage Décor & Backdrops
- Building Wraps / Wallscapes
- Site Signage
- Event Graphics
- Trade Show Graphics
- Privacy / Mesh Fencing
- Vehicle & Fleet Graphics
- Digital Displays
- Wall Coverings

Small Format

- Business Documents
- Brochures & Flyers
- Business Cards

Other Services

- Design
- Installation
- Equipment & Supplies
- Promotional Products

RUSH ORDERS WELCOME!

VISIONDOESIT.COM | 801.973.8929

Product templates are available for download at:
VisionDoesIt.com/Templates