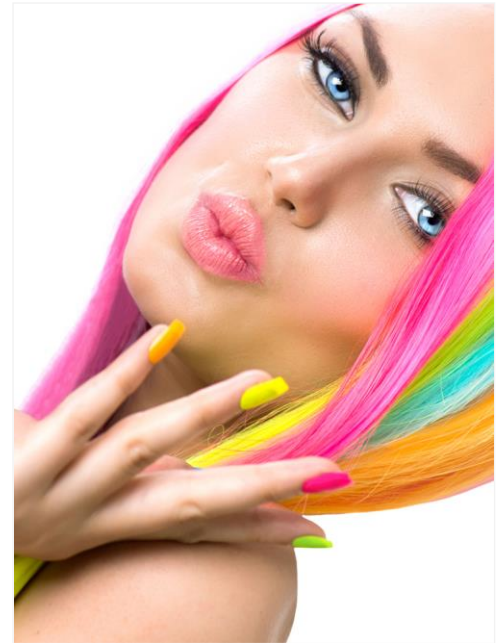




Vision Back-lit Pro – 15oz

Gloss & Matte

Vision Back-lit Pro is a 15 oz. economical, back-lit substrate used for a wide array of illuminated indoor or short-term outdoor applications. The smooth print surface has been engineered to avoid flow marks when back-lit. Vision Back-lit Pro is available in matte and gloss finishes and is compatible for use with solvent, eco-solvent, UV, Latex and screen printing. Available in widths from 54" - 196".



FLEXIBLE

	Front or Back-lit	Indoor/Outdoor	Banner	Billboard	Block-out	Building Wrap	Trade Shows	Display Systems	Truckside	Retail/POP	Movie Banner
Vision Back-lit Pro – 15oz	BACK	IN OUT	●	●				●			

CHARACTERISTICS	TEST METHOD	METRIC	ENGLISH
Support Cloth	DIN60001	Polyester PES High Tenacity Yarn	
Yarn dtex	DIN EN ISO 2060	1100 x 1100 dtex	1000 x 1000 denier
Type of Coating	N/A	PVC	PVC
Total Weight	DIN EN ISO 2286-2	510 g/m ²	15 oz.
Tensile Strength	ISO 13934-1:1999 C.R.E. Strip Method	2065.3 x 1773.0 N/5cm	235.8 x 202.5 lbs/in
Tear Strength (warp/weft)	ISO 13937-2:2000, C.R.E Single Tongue Method	206 x 167 N	46 x 38 lbs
Flame Resistance	DIN 75200	NFPA701, Title 19, CSFM, B1	
Low Temperature (No Crack at:)	ISO 13934-1:1999	-20°C	-4°F
RF Weldable (Heat Sealable)	IN 53354	YES	
Fungus Resistance	ASTM G21	Treated	

All statements, technical information and recommendations about Vision Graphics substrates are based upon tests believed to be reliable but do not constitute a guarantee or warranty. All Vision Graphics products are sold with the understanding that the purchaser has independently assumed responsibility in determining the suitability of such product for its purposes. +1/-2 variance is allowed on all specs.

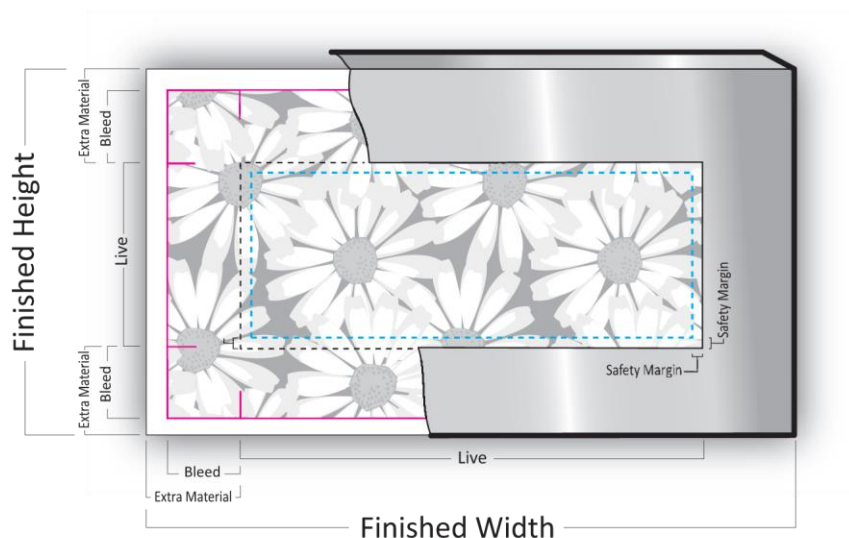
It is the responsibility of purchasers to independently verify, prior to use, the suitability of the products for their specific applications and print methods. SBR/Vision Graphics cannot be held liable for any misuse, damage or losses as specified in its product warranty. Subject to change without notice.



Backlit Nomenclature & Measuring Guide

The terms and measurements required to accurately produce a Backlit sign can be confusing. Communicating with everyone from artist to installer is simplified when everyone is speaking the same language.

Shown below is a typical Backlit with the frame cut away.



Terms to Understand

- Live Area:** The area visible within the opening of the frame.
- Bleed:** Image that is printed on the extra material “just in case” the structure measurements are slightly off or the image is not installed perfectly.
- Extra Material:** Any substrate beyond the Live Area that is required to clamp/stretch or attach the graphic to the structure.
- Safety Margin:** Represented in the illustration as a dashed blue line. An arbitrary distance within the Live Area to prevent critical copy/artwork from being too close to the frame.