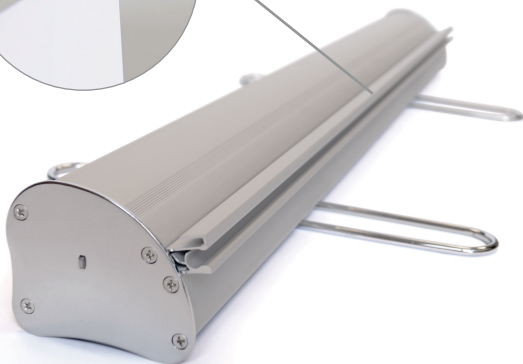




VISION GRAPHICS

LOOK GOOD. BE SEEN.

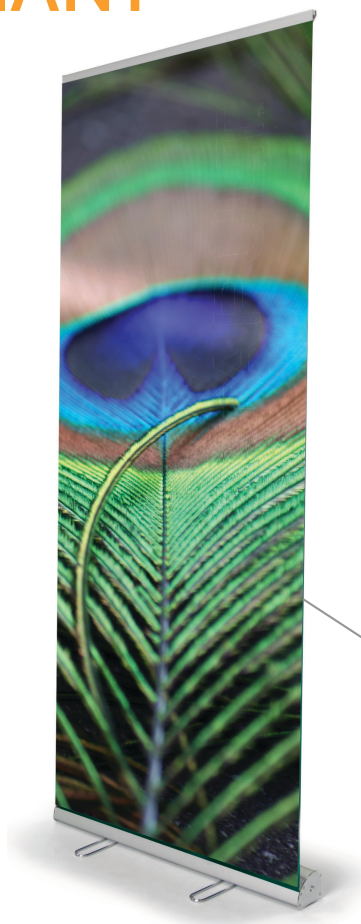


12" Tabletop Version

The tabletop model is an adjustable-height product. The print price assumes a full-height graphic. The 12" tabletop model does not have support feet, the 24" model has 1 support foot, other sizes feature 2 support feet.



RELIANT



- Heavy gauge aluminum construction.
- Polished chrome end caps and feet.
- Finish: **Silver** or **Black**
- Graphic is held with top clamp rail and bottom adhesive leader film.
- Features fixed-height 3-part pole (34", 39", 48" And 60" models).
- Features fixed-height 4-part pole (24" model only).
- Features adjustable-height pole (15" model only).
- Features adjustable-height 2-part pole (12" model only).
- Padded carrying case included.



lifetime
warranty



indoor



connectable



custom
printing
available



magnetic top
clamp connector



universal
light kit



UL listed

For instructions on preparing and submitting artwork - see back of catalog cover.

Item	Finish	W	H	Print Only			Hardware + Print*		
				1-5	6-11	12+	1-5	6-11	12+
VG-RB-DRRS12	Silver	11.75"	20"	\$56	\$53	\$49	\$100	\$94	\$88
VG-RB-DRRS15	Silver	15"	35.5"	\$64	\$60	\$57	\$142	\$131	\$124
VG-RB-DRRB15	Black	15"	35.5"	\$64	\$60	\$57	\$151	\$140	\$133
VG-RB-DRRS24	Silver	23.5"	78"	\$116	\$110	\$106	\$229	\$211	\$196
VG-RB-DRRS34	Silver	33.5"	78"	\$166	\$157 ¹	\$151	\$302	\$281	\$264
VG-RB-DRRB34	Black	33.5"	78"	\$166	\$157	\$151	\$311	\$290	\$273
VG-RB-DRRS39	Silver	39.3"	78"	\$195	\$184	\$177	\$353	\$331	\$313
VG-RB-DRRS48*	Silver	47.25"	78"	\$234	\$221	\$213	\$416	\$391	\$372
VG-RB-DRRS60	Silver	59"	78"	\$292	\$276	\$266	\$497	\$467	\$448

Description	Item	Hardware
Magnetic Top Clamp Connector	VG-RB-DRAMCS	\$14
Universal LED Light Kit, 50W	VG-DS-DRULS	\$81

*The 48" and 60" Reliant models feature 2 fixed-height poles, for added stability. Starting price on Vision Smooth Vinyl. Prices may vary based on banner material and add-on options. We recommend adding 7" of length to the bottom of the viewable graphic height (listed above) in order to reinforce the attachment to the spring cassette.