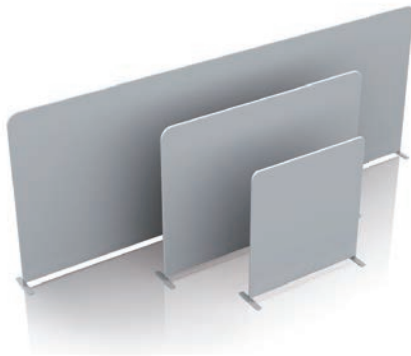




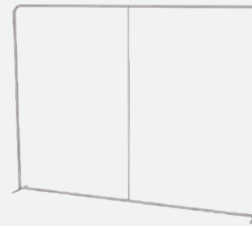
STRAIGHT WALL



- Durable
- Simple set-up



INCLUDED COMPONENTS



Frame and Feet



Storage Bag

ACCESSORIES



Slim Line LED



Small Wheeled Case



Travel Case Counter



Item	W	H	Hardware		Print Only Single-Sided		Print Only Double-Sided*		Hardware + Print Single-Sided		Hardware + Print Double-Sided*	
			1	2-10	1	2-10	1	2-10	1	2-10	1	2-10
SW-8	96"	90"	\$313	\$279	\$509	\$479	\$898	\$868	\$822	\$757	\$1211	\$1146
SW-10	115"	90"	\$344	\$306	\$610	\$574	\$1076	\$1040	\$954	\$879	\$1420	\$1346
SW-20	234"	115"	\$565	\$502	\$1243	\$1170	\$2194	\$2121	\$1808	\$1672	\$2759	\$2623

*All double-sided prints include a block-out liner

Description	Item	Hardware
Travel Case Counter	TRLCASE-CTR	\$391
Wrap for Large Trolley Case	TRLCASE-CTR-WRAP	\$254
Small Wheeled Trolley Case	TRLCASE-SM	\$193
Linkable LED Wall Wash Light	LIGHT-LNK	\$127